

# Part 2.7: Maintenance Functions – Dashboard & Reports

## Calem Enterprise Training

Summer 2024

Austin, Texas



# What are the goals – Reports

CalemEAM

## Goals

I know that dashboard, analysis and reports are available

I know that reports are ACL profile compliant

I know that report layout can be customized

# What are the goals - Dashboard

CalemEAM

## Goals

I know how to read summary KPIs

I know how to read WO P&S KPIs

I know how to read Asset KPIs

I know how to read Inventory KPIs

I know how to read the WO LogBook

I know how to read WO SLA KPIs

I know how to read WO PM/EMS KPIs

I know how to read WO Misc KPIs

# What are the goals – Analysis Module

CalemEAM

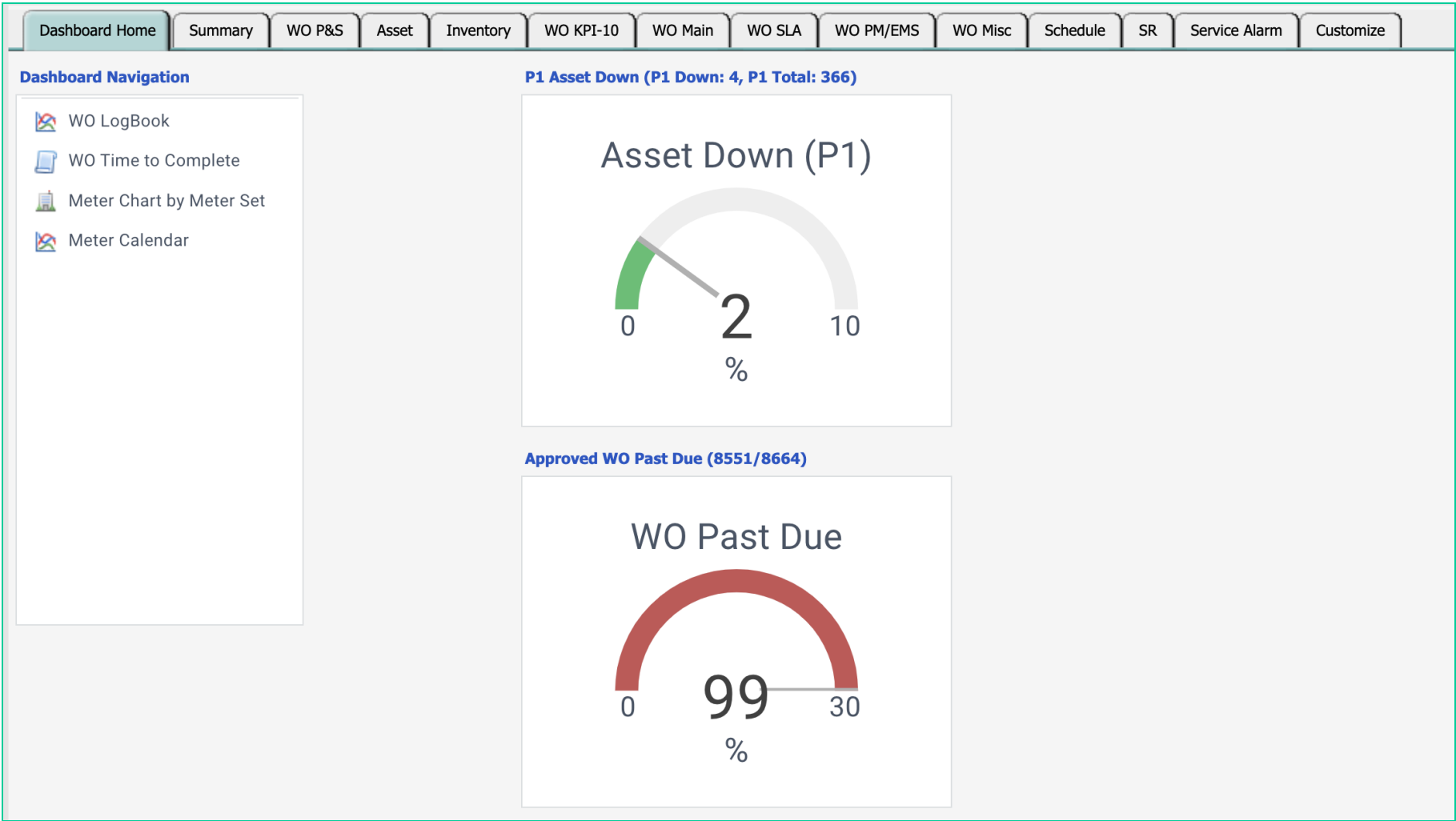
## Goals

I know that work summary reports by various grouping

I know that asset and location summary by various grouping

I know that work order labor summary including actual labor

I know that asset downtime summary by various grouping



**Calem Reporting includes:**

- **Dashboard:** summary and graphs
- **Analysis:** summary with grouping
- **Reports:** each module may have own reports
  - **Work Order | Report**
  - **Asset | Report**
  - **PM | Report**
  - **Inventory | Report**
  - **Other modules**

The report data is based on the ACL Profile of the login user.

- If the login user has access to all sites, the dashboard is for all sites.
- If the login user has access to selective sites, the dashboard reflects that.

A list report can be customized just like a list form in Calem.

New reports need to be created by Calem.

Additional reporting tools can be used with Calem database directly



# Product – WO Summary Dashboard

CalemEAM

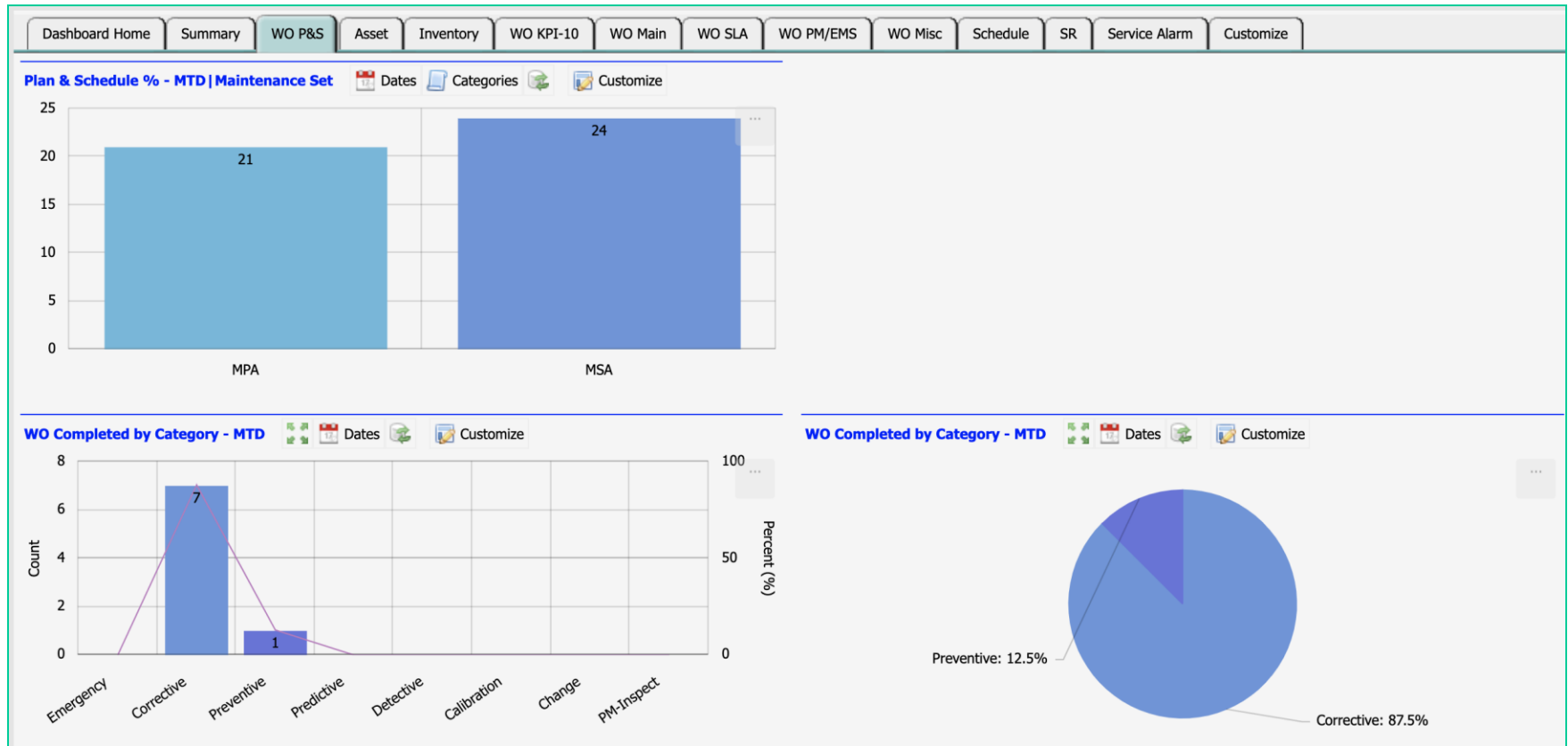


# Product – WO Summary Multi-Site

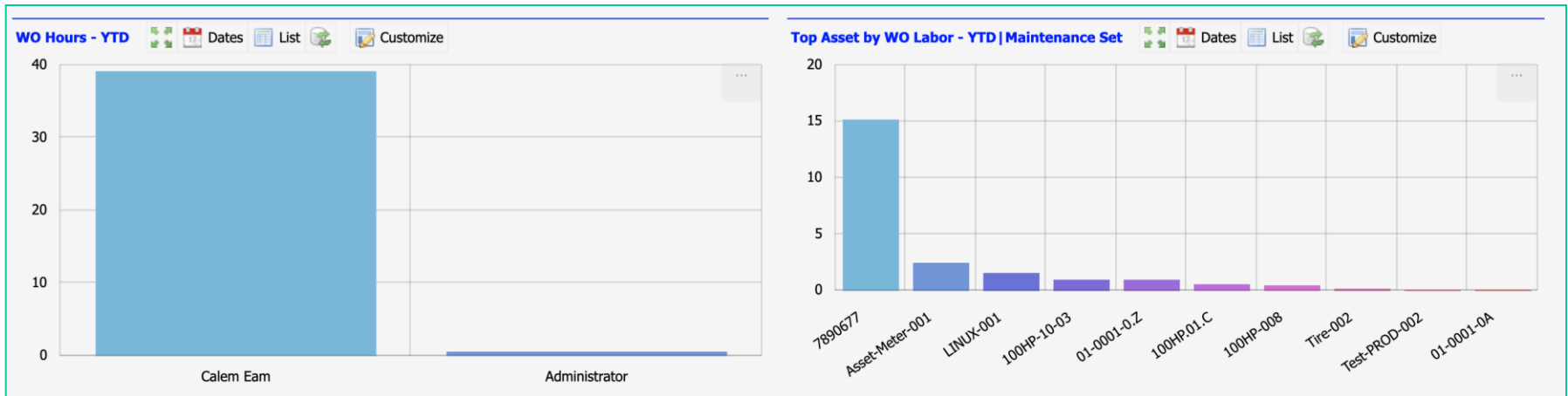
CalemEAM



- Maintenance Planning Adherence (MPA)
- Maintenance Scheduling Adherence (MSA)



- Top Labor Hours spent by user and asset



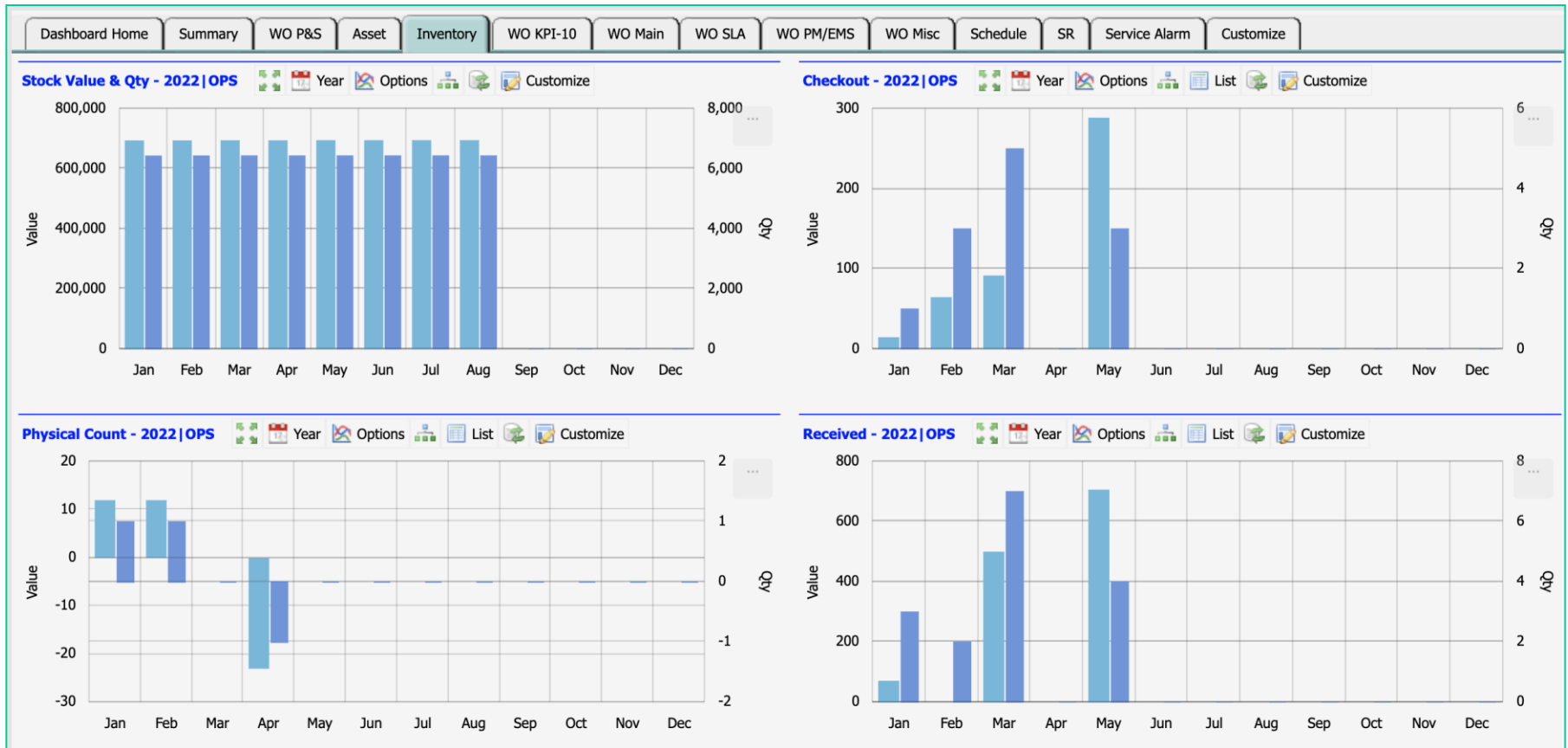
- Filter by Asset Classes
- Filter by Dates



# Product – Inventory KPI

CalemEAM

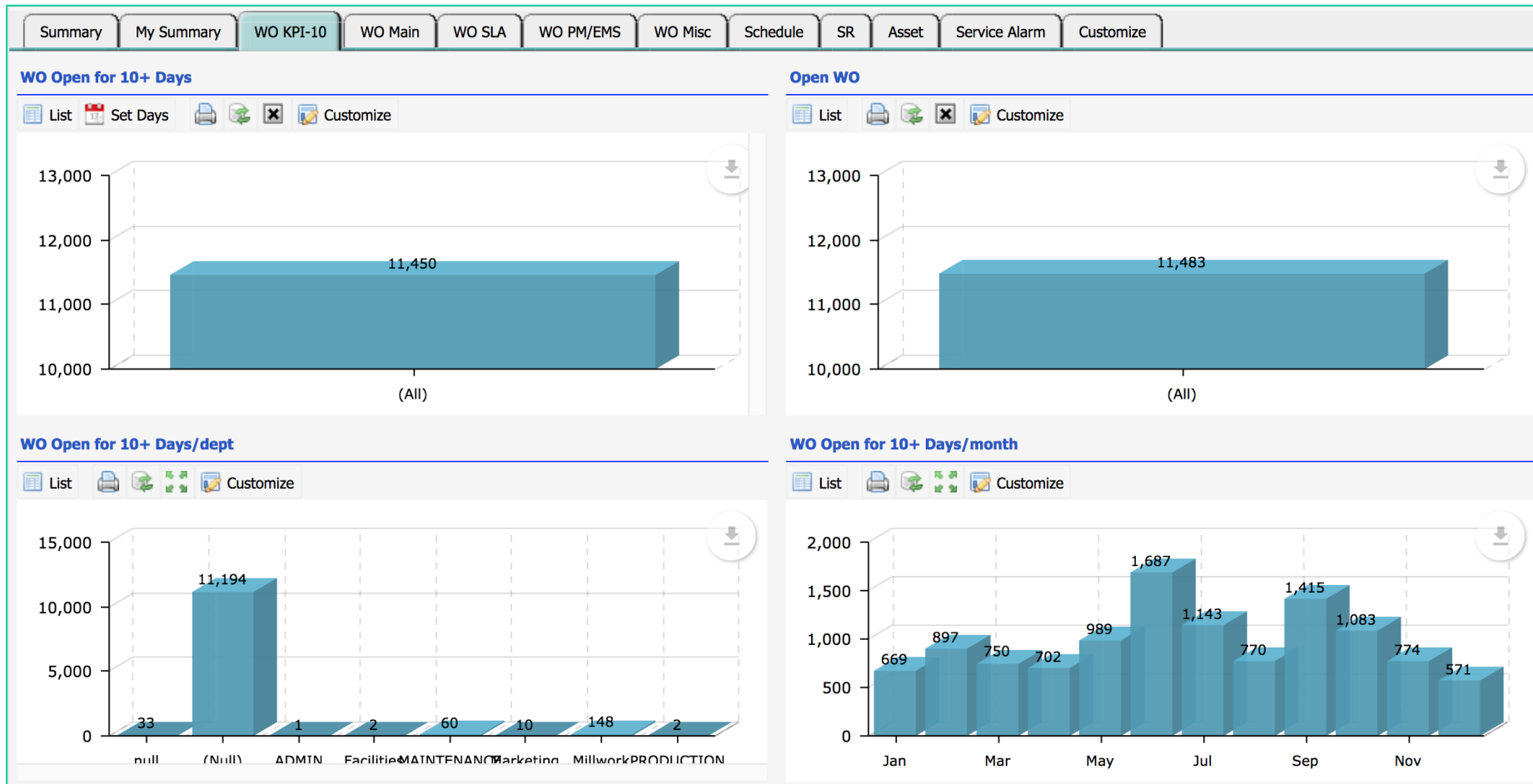
- Mult-Site ready
- Date and options filtering



- Comments and status changes in work orders by previous days/shifts
- It is the digital form of the paper work order log book.

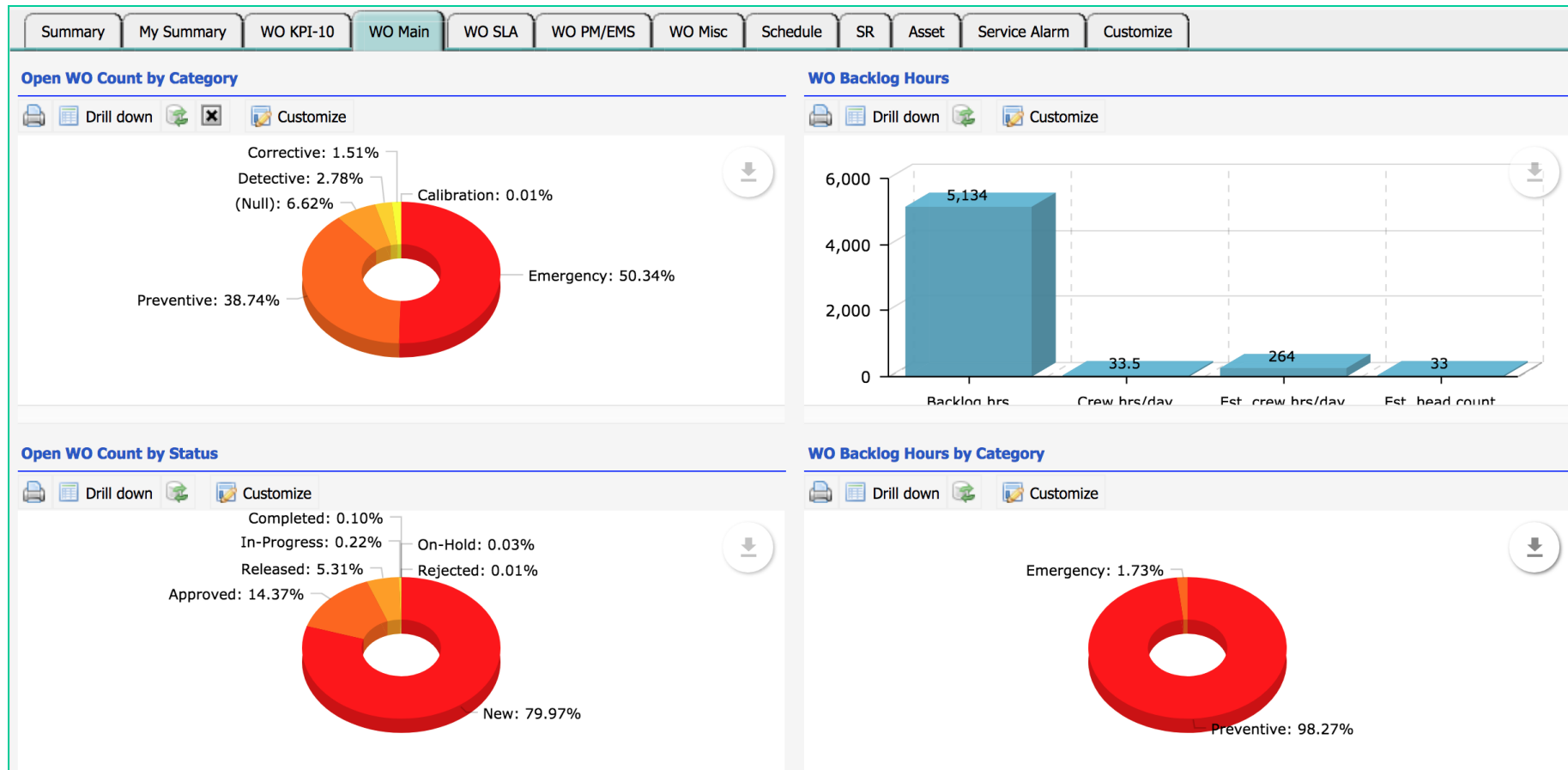
WO LogBook - Last 100 Day(s) (17)								
<div>    Set Days/Range             Customize         </div>								
Wo #	Priority	Status	Subject	Comment	Asset Tag	Location	Comment time	
150958	P1	Completed	My sub		0911-2345			
151637	P2	Completed	summary		100HP-004	B02.HQ		
149638	P1	Completed	test			B07.MyCA_Site1		
151129	P3	Completed	Test weekly schedule			B11.TX-M001		
151142	P1	Completed	Machine is too hot		100HP-011	CA.BuildingMain-0...		
131697	P3	Completed	Weekly PM test	test	401402-17	B02.HQ	9/15/18 4:53 PM...	
131697	P3	Completed	Weekly PM test	test	401402-17	B02.HQ	5/16/18 3:02 PM...	
151143	P1	Completed	d2		MySite-00269	B05.TestLoc		
143784	P4	Completed	PM_Weekly		401402-17	B02.HQ		
151272	P3	In-Progre...	Monthly parent	Cmt-01	HBE-TEST-002	B02.HQ	9/15/18 4:05 PM...	
151271	P3	In-Progre...	Daily PM	test		B05.TestLoc	9/15/18 4:22 PM...	
151088	P4	Completed	PM_Weekly	testing it	MySite-01544	B02.HQ	9/15/18 2:23 PM...	

- Misc KPIs for work orders – review and select to monitor
- Parameters (Days | Months) can be adjusted





## WO Main shows KPIs of the current state of work orders



# Dashboard – WO SLA

CalemEAM

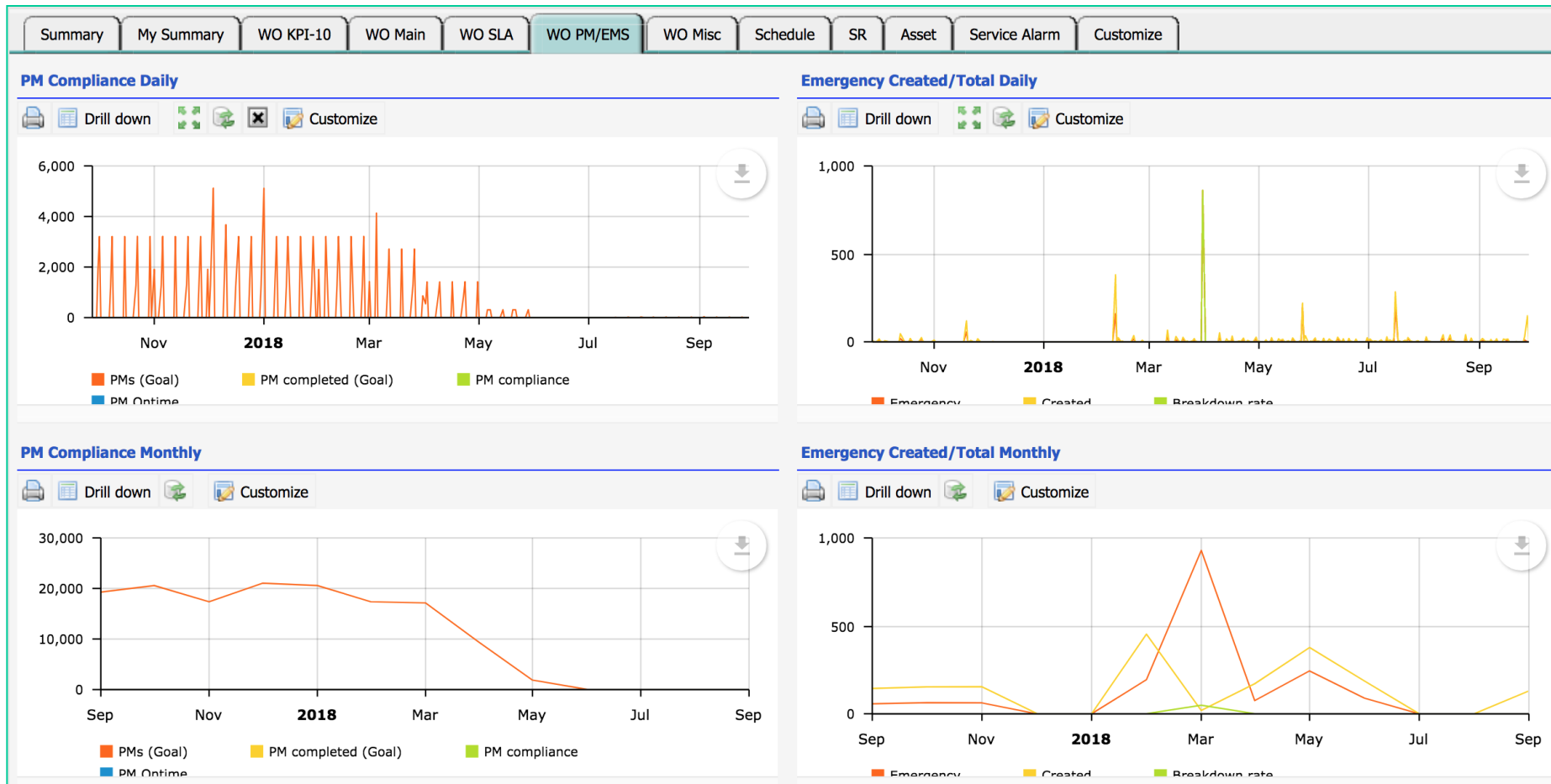
- Created/Completed: Daily/Monthly
- Scheduled/Completed: Daily/Monthly
- SLA/Completed: Daily/Monthly



# Dashboard – WO PM/Emergency

CalemEAM

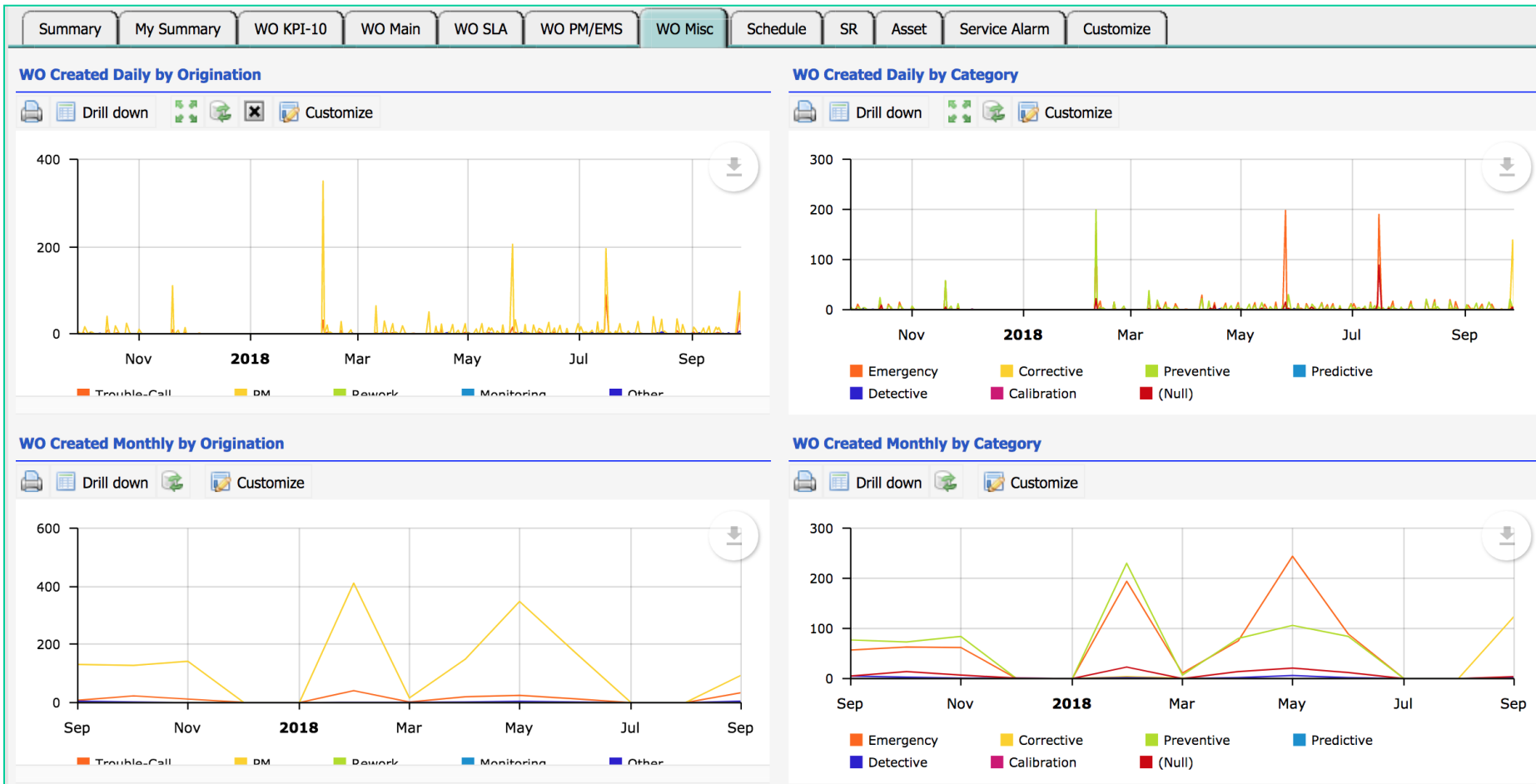
- PM Created/Completed: Daily/Monthly
- EMS Created/Total WO: Daily/Monthly
- EMS Created/Completed: Daily/Monthly



# Dashboard – WO Misc

CalemEAM

- Created by Origin: Daily/Monthly
- Created by Category: Daily/Monthly



- **Resource Scheduling:**
  - **Planned/Scheduled/Actual/Resource Total: Daily/Monthly**
- **Service Request:**
  - **Created/Completed: Daily/Monthly**
- **Service Alarms:**
  - **Alarm Summary by Site**
  - **Alarm Age by Type**
  - **Alarm Count by Status: Daily/Monthly**

- **WO Summary Monthly Chart to List Views**
- **WO Summary Multi-site Charts**
- **Change the year for WO Summary**

## Work Order and Asset Reports

- By date range
- By grouping

## Work Order Summary by Grouping:

- WO Summary by type
- WO Summary by cost center
- WO Summary by dept
- WO Summary by assignment
- WO Summary by failure
- WO Summary by category
- WO Summary by origination
- WO Summary by asset
- WO Summary by asset categorization
- WO Summary by location
- WO Summary by site
- WO Summary by project



- **WO Labor Summary by Users**
- **WO Actual Labor Summary By Grouping**
  - User
  - Team
  - Dept
  - Site

## Asset Summary by Site and the Following:

- Categorization
- Asset Item
- Priority
- Status
- Site
- Dept
- Cost Center
- Location
- Model
- Manufacturer
- Vendor

## Location Summary by Site and the Following:

- Categorization
- Location Group
- Priority
- Status
- Site
- Dept
- Cost Center
- Route

**Thank You for Attending  
the CalemEAM Training!**  
**Visit Us at [www.calemeam.com](http://www.calemeam.com)**









# WO Time to Complete & Meter Charts

CalemEAM

- Menu: Dashboard | Open
- Work order by category and time to complete
- Meter reading calendar: weekly reading excel presentation
- Meter reading chart: graph of meter readings

[WO Time to Complete Edit](#) > WO Time to Complete by Category List

 **WO Time to Complete by Category (3)**

     Customize

Category	Created	Completed	Closed	Avg Days to Complete
Corrective	15	3		7
Emergency	50	1		17
Preventive	84	2		2.5

Meter Calendar			From:	21-Sep-18	To:	28-Sep-18								
			21-Sep-18			22-Sep-18			23-Sep-18			24-Sep-18		
Tag number	Alarm value	Meter	Night	Morning	Afternoon	Night	Morning	Afternoon	Night	Morning	Afternoon	Night	Morning	Afternoon

# Dashboard – Summary & My Summary

CalemEAM

- Summary: data accessible to the login user
- My summary: data accessible & assigned to the login user
- Demo Dashboard

Summary	My Summary
WO Summary	My WO Summary
Change Summary	My Change Summary
WO Completed	My WO Completed
WO In-Process	My WO In-Process
Weekly Progress	My Weekly Progress
Daily Emergency	My Daily Emergency
Weekly Compliance	My Weekly Compliance